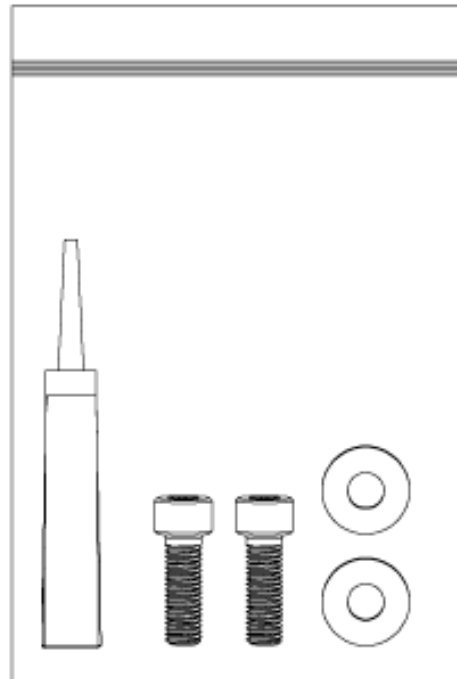
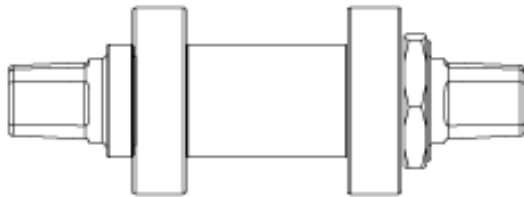


- ① Complete Assy  
Includes BB + Screw Kit



- ② Screw Kit  
Includes:  
2 Screws  
2 Washers  
1ml Loctite

Serial#s Starting: Nxt-1xxxxxx, NSI-1xxxxxx, NSD-1xxxxxx

SKUs: 9-7000-xxxxx, 9-7000-SUSAP0, 9-7000-SINTP0

Bottom Bracket Assembly

Callout	Part Number	Description
1	800-4030	BOTTOM BRKT KIT, PRO/ELITE
2	740-7512	KIT, HARDWARE, BOTTOM BRKT

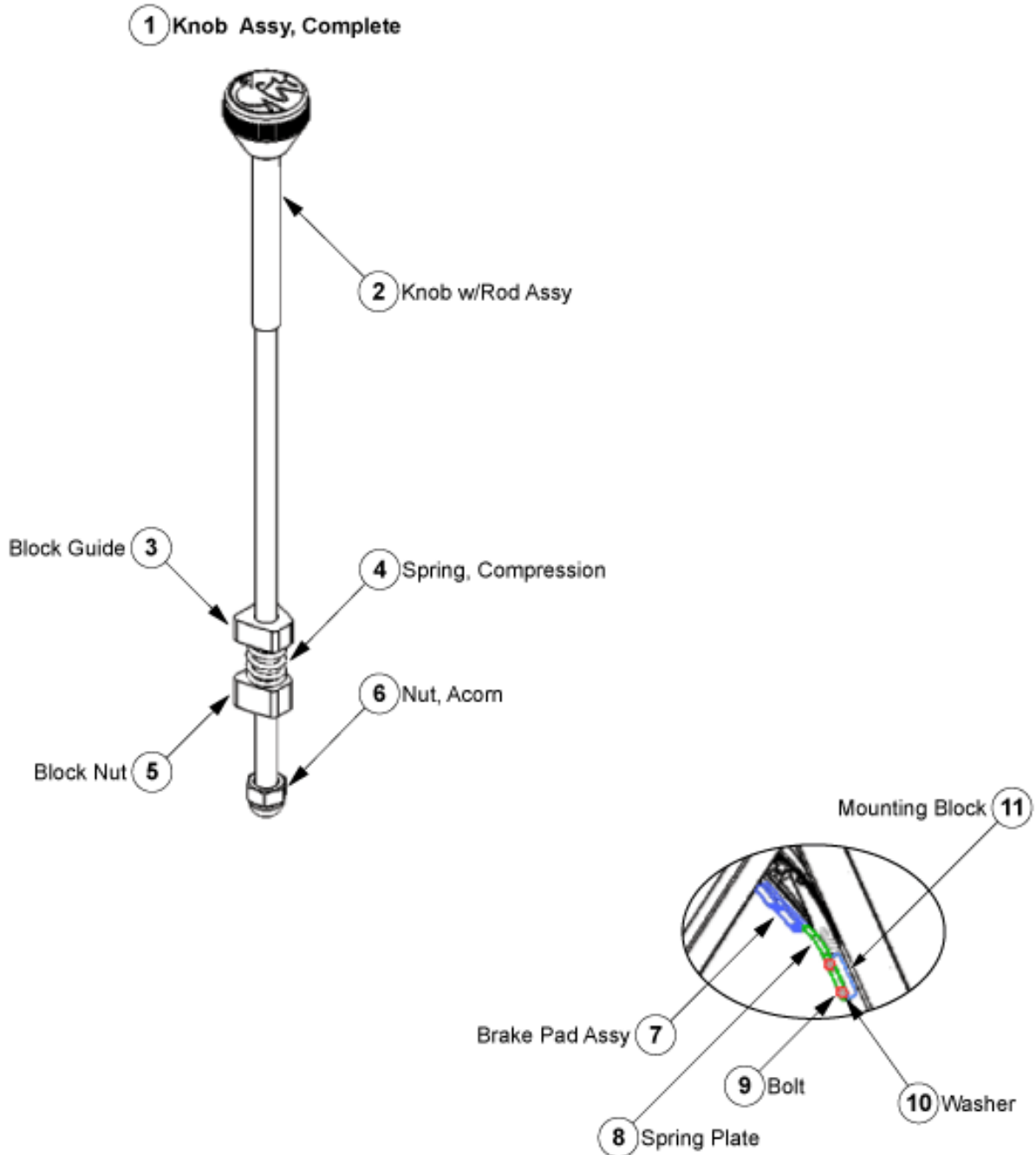
2011-06-27



# Star Trac NXT Spinner NXT 7000

## Brake Assy

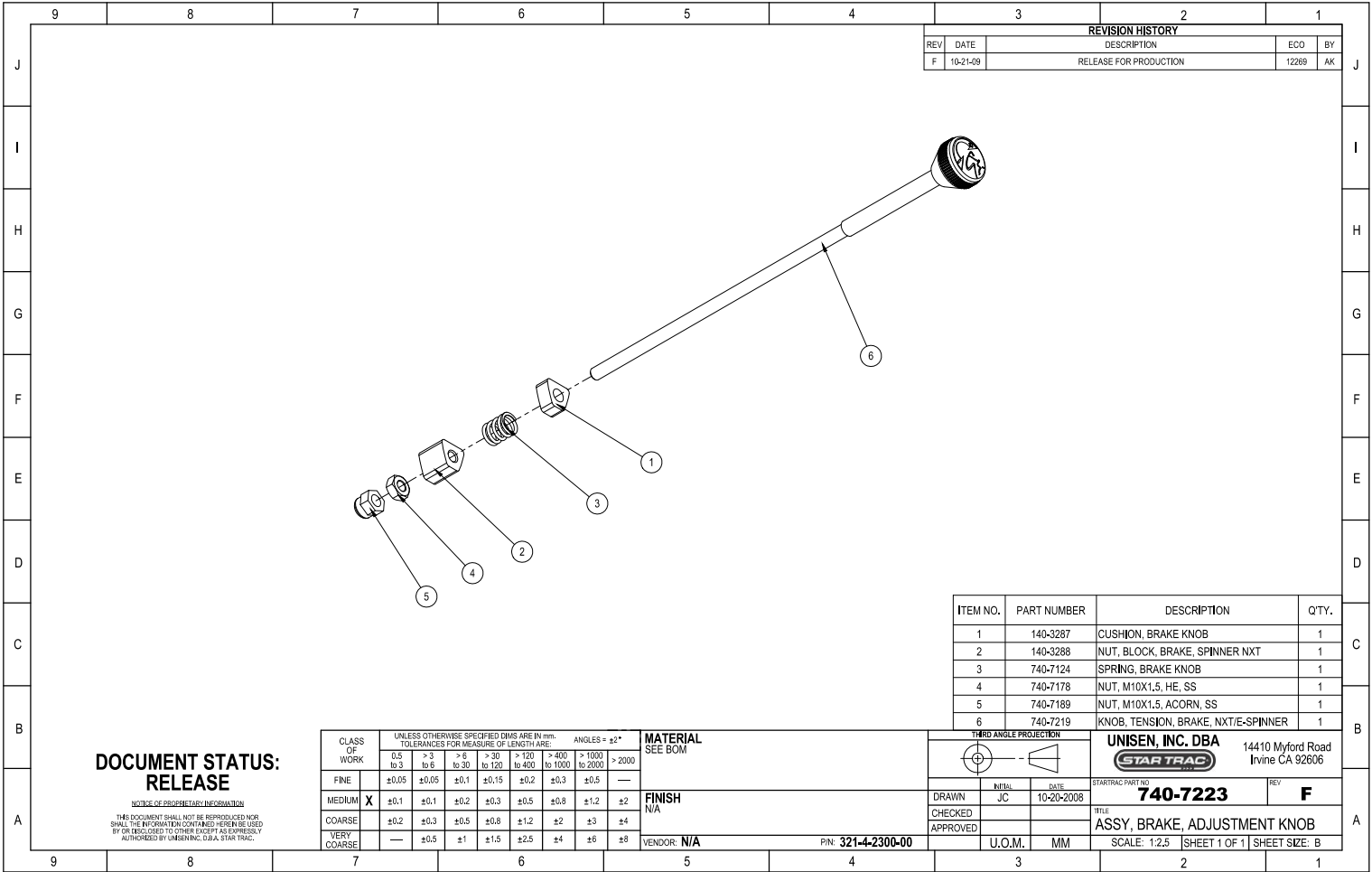
Serials Starting: NSD-1xxxxxx or NSI-1xxxxxx or NXT-1xxxxxx



Callout	Part Number	Description
1	740-7223	ASSY, BRAKE, ADJ KNOB
2	740-7223	ASSY, BRAKE, ADJ KNOB
3	140-3287	GUIDE, BLOCK, BRAKE, SPINNER
4	740-7223	ASSY, BRAKE, ADJ KNOB
5	140-3288	NUT, BLOCK, BRAKE, SPINNER
6	800-3282	*ALT* USE PART # 740-7189 <i>Orig Descr:</i> NUT, BRAKE ACORN CAP, VB
7	740-6872	ASSY, PAD BRAKE, SPINNER, 7060/7070/7080/7090
8	740-7019	PLATE, BRAKEPAD
9	110-3318	BOLT, HEX, M6X1.0X30
10	120-3286	WASHER, 6MM, REGULAR
11	020-6618	BLOCK, BRAKE, SPINNER NXT

Serial#s Starting: NXT-1xxxxxx, NSI-1xxxxxx, NSD-1xxxxxx  
 SKUs: 9-7000-xxxxx, 9-7000-SUSAP0, 9-7000-SINTP0  
 Brake Assembly

2011-06-27



REVISION HISTORY			
REV	DATE	DESCRIPTION	ECO BY
F	10-21-09	RELEASE FOR PRODUCTION	12269 AK

ITEM NO.	PART NUMBER	DESCRIPTION	QTY.
1	140-3287	CUSHION, BRAKE KNOB	1
2	140-3288	NUT, BLOCK, BRAKE, SPINNER NXT	1
3	740-7124	SPRING, BRAKE KNOB	1
4	740-7178	NUT, M10X1.5, HE, SS	1
5	740-7189	NUT, M10X1.5, ACORN, SS	1
6	740-7219	KNOB, TENSION, BRAKE, NXT/E-SPINNER	1

**DOCUMENT STATUS:  
RELEASE**

NOTICE OF PROPRIETARY INFORMATION  
THIS DOCUMENT SHALL NOT BE REPRODUCED NOR SHALL THE INFORMATION CONTAINED HEREIN BE USED BY OR FOR OTHERS WITHOUT EXPRESSLY AUTHORIZED BY UNISEN, DBA, STAR TRAC.

CLASS OF WORK	UNLESS OTHERWISE SPECIFIED DIMS ARE IN mm. TOLERANCES FOR MEASURE OF LENGTH ARE:							ANGLES = ±2°		
	0.3 to 3	>3 to 6	>6 to 30	>30 to 120	>120 to 400	>400 to 1000	>1000 to 2000	>2000		
FINE	±0.05	±0.05	±0.1	±0.15	±0.2	±0.3	±0.5	—		
MEDIUM <b>X</b>	±0.1	±0.1	±0.2	±0.3	±0.5	±0.8	±1.2	±2		
COARSE	±0.2	±0.3	±0.5	±0.8	±1.2	±2	±3	±4		
VERY COARSE	—	±0.5	±1	±1.5	±2.5	±4	±6	±8		

<b>MATERIAL</b> SEE BOM	<b>FINISH</b> N/A	<b>VENDOR:</b> N/A	<b>P/N:</b> 321-4-2300-00
----------------------------	----------------------	--------------------	---------------------------

THIRD ANGLE PROJECTION		
DRAWN	INITIAL	DATE
CHECKED	JC	10-20-2008
APPROVED		

<b>UNISEN, INC. DBA</b> <b>STAR TRAC</b>	14410 Myford Road Irvine CA 92606
STARTRAC PART NO <b>740-7223</b>	REV <b>F</b>
TITLE <b>ASSY, BRAKE, ADJUSTMENT KNOB</b>	
SCALE: 1:2.5   SHEET 1 OF 1   SHEET SIZE: B	

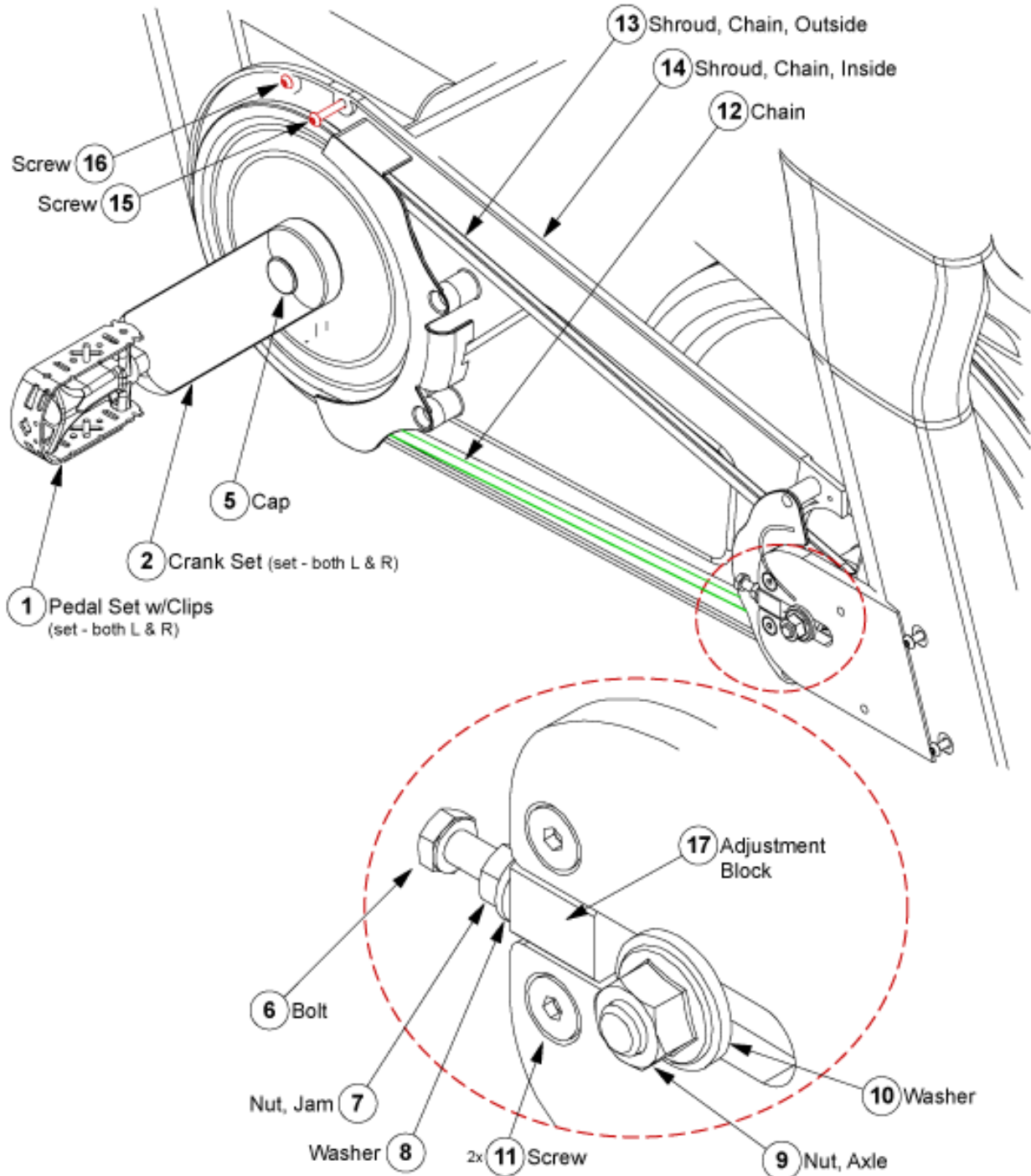


# Star Trac NXT Spinner

NXT 7000

## Drive Assy

Serials Starting: NSD-1xxxxxx or NSI-1xxxxxx or NXT-1xxxxxx



Serial#s Starting: NXT-1xxxxxxx, NSI-1xxxxxxx, NSD-1xxxxxxx

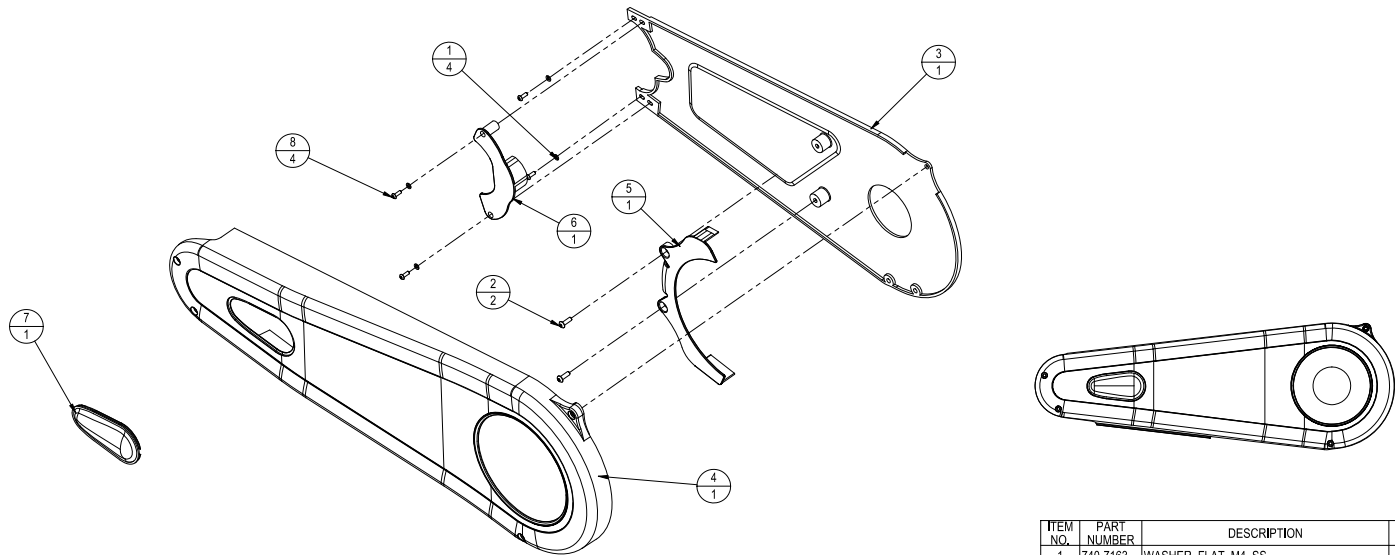
SKUs: 9-7000-xxxxx, 9-7000-SUSAP0, 9-7000-SINTP0

Drive Assembly

Callout	Part Number	Description
1	740-6898	SET PEDAL, SPD 7070/7080/7090
2	800-4026	CRANK SET, NXT
5	140-3322	CAP, CRANK, SPINNER
6	110-3326	BOLT, HEX, M6X1.0X50
7	110-3325	NUT, HEX, STYLE 1, M8X1.25
8	120-3291	WASHER, SPRING, M6
9	740-7191	NUT, 3/8-26, FLANGE, HEX, CS,
10	120-3285	WASHER, FLYWHEEL AXLE, SPINNER
11	110-3328	SCREW, M6X1.0X16X, SOCKET FCHS
12	740-6900	CHAIN, 110 LINK, NXT, 7090
13	740-6908	ASSY, CHAIN GUARD OUTER, 7090
14	740-7225	ASSY, CHAIN GUARD, NXT/E-SP
15	110-3332	SCREW, M5X0.8X25, SBHCS
16	110-3331	SCREW, M5X0.8X50, SBHCS
17	020-6603	BLOCK, FLYWHEEL ADJUSTMENT, SP

2011-06-27

REVISION HISTORY				
REV	DATE	DESCRIPTION	ECO	BY
F	10-21-09	RELEASE FOR PRODUCTION	12272	AK
G	05-26-10	REMOVE VENDOR PIN	13142	VW



ITEM NO.	PART NUMBER	DESCRIPTION	QTY.
1	740-7163	WASHER, FLAT, M4, SS	4
2	740-7183	SCREW, M5X0.8X16, BHC, HE, SS	2
3	740-7286	CHAIN GUARD, INSIDE, NXT/E-SPINNER	1
4	740-7287	CHAIN GUARD, OUTSIDE, NXT/E-SPINNER	1
5	740-7288	FINGERGUARD, CRANK, NXT/E-SPINNER	1
6	740-7289	FINGERGUARD, FLYWHEEL, SPROCKET	1
7	740-7290	ADJUSTMENT CAP, CHAIN, GUARD	1
8	740-7300	SCREW, B18.3, 4M-4X0.7X12 SBHCS-N	4

**DOCUMENT STATUS:  
RELEASE**

NOTICE OF PROPRIETARY INFORMATION  
THIS DOCUMENT SHALL NOT BE REPRODUCED NOR SHALL THE INFORMATION CONTAINED HEREIN BE USED BY OR DISCLOSED TO OTHERS EXCEPT AS EXPRESSLY AUTHORIZED BY UNISEN INC. DBA STAR TRAC.

CLASS OF WORK	UNLESS OTHERWISE SPECIFIED DIMS ARE IN mm. TOLERANCES FOR MEASURE OF LENGTH ARE							ANGLES = ±°*
	0.5 to 3	> 3 to 6	> 6 to 30	> 30 to 120	> 120 to 400	> 400 to 1000	> 1000 to 2000	
FINE	±0.05	±0.05	±0.1	±0.15	±0.2	±0.3	±0.5	—
MEDIUM <b>X</b>	±0.1	±0.1	±0.2	±0.3	±0.5	±0.8	±1.2	±2
COARSE	±0.2	±0.3	±0.5	±0.8	±1.2	±2	±3	±4
VERY COARSE	—	±0.5	±1	±1.5	±2.5	±4	±6	±8

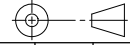
**MATERIAL**  
SEE BOM

**FINISH**  
N/A

VENDOR: **N/A**

P/N:

THIRD ANGLE PROJECTION



DRAWN	INITIAL	DATE
CHECKED	JC	10/13/08
APPROVED		

**UNISEN, INC. DBA**  
**STAR TRAC**  
14410 Myford Road  
Irvine CA 92606

STARTRAC PART NO.	REV
<b>740-7225</b>	<b>G</b>
TITLE	
<b>ASSY, CHAIN GUARD, NXT/E-SPINNER</b>	
SCALE: 1:5	SHEET 1 OF 1
SHEET SIZE: B	

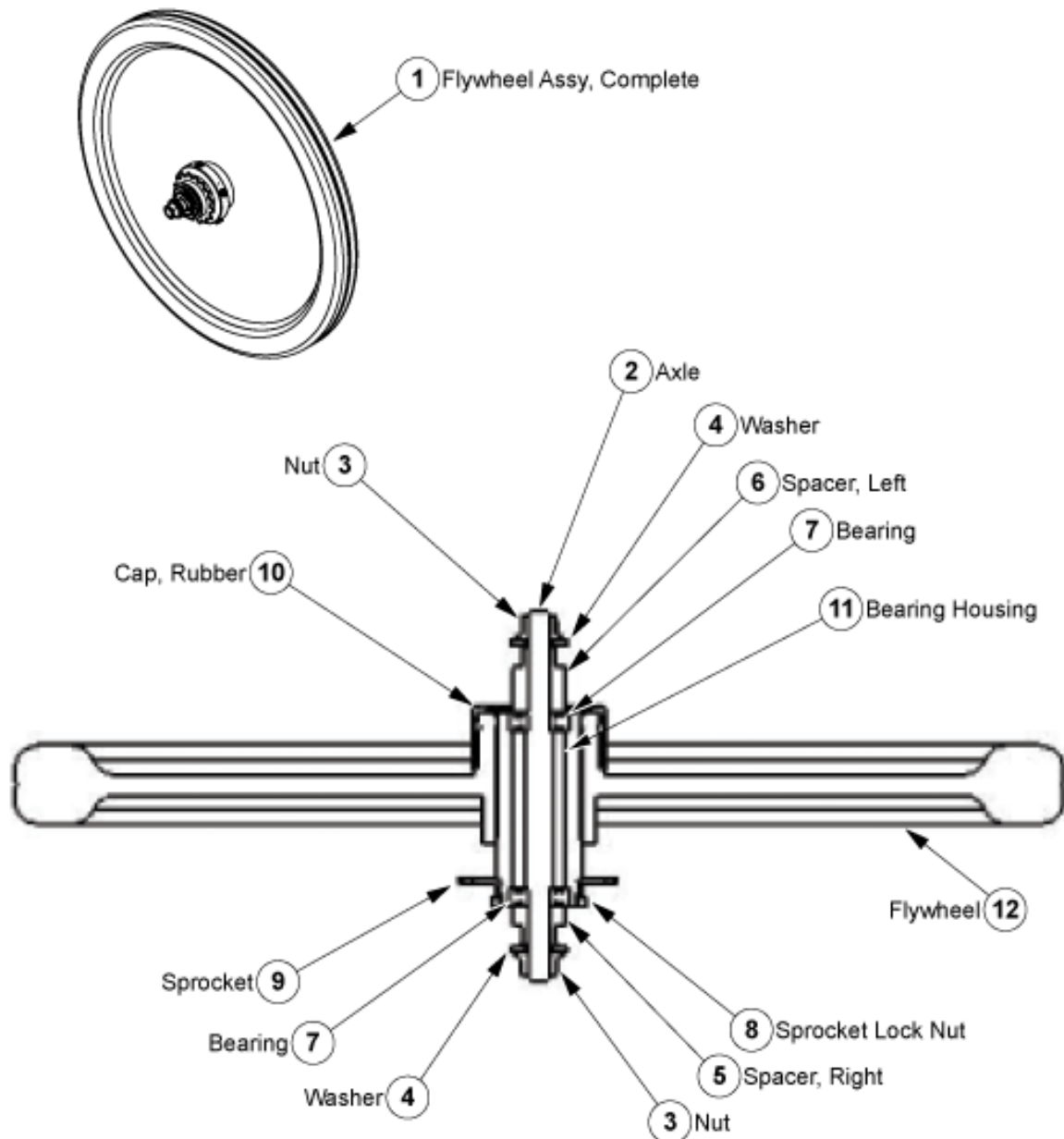




# Star Trac NXT Spinner NXT 7000

## Flywheel Assy

Serials Starting: NSD-1xxxxxx or NSI-1xxxxxx or NXT-1xxxxxx



Serial#s Starting: NXT-1xxxxxx, NSI-1xxxxxx, NSD-1xxxxxx

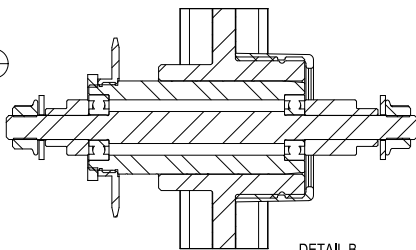
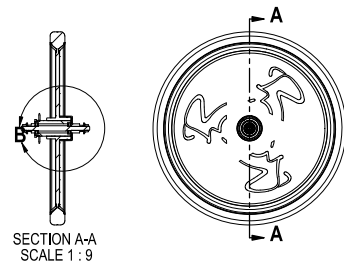
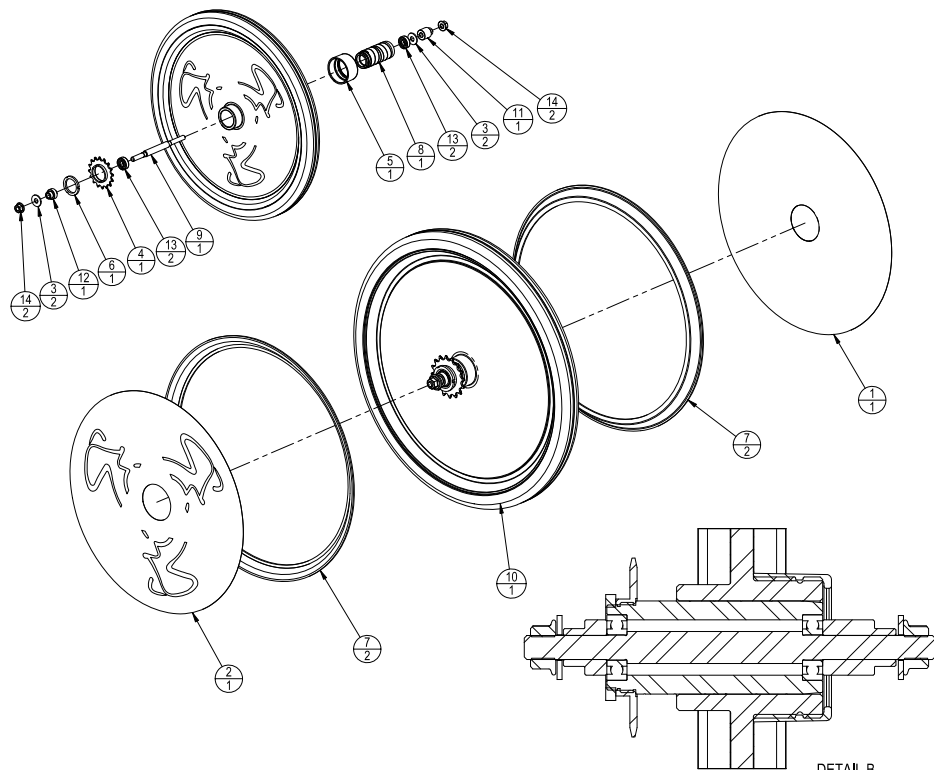
SKUs: 9-7000-xxxxx, 9-7000-SUSAP0, 9-7000-SINTP0

Flywheel Assembly

Callout	Part Number	Description
1	740-6870	ASSY, FLYWHEEL, NXT/PRO, 7090/7070
2	740-7119	AXLE, FLYWHEEL, NXT
3	740-7191	NUT, 3/8-26, FLANGE, HEX, CS,
4	120-3285	WASHER, FLYWHEEL AXLE, SPINNER
5	740-7158	SPACER, AXLE, RIGHT, SPINNER
6	740-7157	SPACER, AXLE, LEFT
7	740-7168	BEARING, 10ID, 26OD, 8THK
8	740-7114	RETAINING NUT
9	740-7013	SPROCKET, WHEEL, 16T
10	740-7015	CAP, RUBBER, FLYWHEEL
11	740-6870	ASSY, FLYWHEEL, NXT/PRO, 7090/7070
12	740-6870	ASSY, FLYWHEEL, NXT/PRO, 7090/7070
13	740-7168	BEARING, 10ID, 26OD, 8THK

2011-06-27

REVISION HISTORY				
REV	DATE	DESCRIPTION	ECO	BY
B		ADD BOM; ADD NOTE 3, REMOVED NOTE 1	12275	AK
F	7/9/2010	SKIPPED REV D TO E, RELEASE WITH STAR TRAC P/N.	13371	FJM



ITEM NO.	PART NUMBER	DESCRIPTION	QTY.
1	050-2127-01	DECAL, FLYWHEEL SPINNING, LEFT	1
2	050-2127-02	DECAL, FLYWHEEL SPINNING, RIGHT	1
3	120-3285	WASHER, ID 10.2MM, OD 25.4MM, THICK 2MM, SS	2
4	740-7013	SPROCKET WHEEL, 16T	1
5	740-7015	CAP, RUBBER, FLYWHEEL	1
6	740-7114	RETAINING NUT	1
7	740-7117	RIM, PLASTIC, FLYWHEEL	2
8	740-7118	HOUSING, BEARING, FLYWHEEL	1
9	740-7119	AXLE, FLYWHEEL, NXT	1
10	740-7120	FLYWHEEL, NXT/PRO	1
11	740-7157	SPACER, AXLE, LEFT	1
12	740-7158	SPACER, AXLE, RIGHT, SPINNER	1
13	740-7168	BEARING, 10D, 26OD, 8THK	2
14	740-7191	NUT, 3/8-26, FLANGE, HEX, CS, BO	2


**PRODUCTION RELEASE**  
 (STAR TRAC)  
 2010.07.22  
 12:56:07  
 -07'00"  
**DOCUMENT STATUS:**  
NOTICE OF PROPRIETARY INFORMATION  
THIS DOCUMENT SHALL NOT BE REPRODUCED NOR SHALL THE INFORMATION CONTAINED HEREIN BE USED BY OR DISCLOSED TO OTHER EXCEPT AS EXPRESSLY AUTHORIZED BY UNISEN INC. U.S.A. STAR TRAC.

CLASS OF WORK	UNLESS OTHERWISE SPECIFIED DIMS ARE IN mm. TOLERANCES FOR MEASURE OF LENGTH ARE							ANGLES = ±°*	
	0.5 to 3	> 3 to 6	> 6 to 30	> 30 to 120	> 120 to 400	> 400 to 1000	> 1000 to 2000	> 1000	> 2000
FINE	±0.05	±0.05	±0.1	±0.15	±0.2	±0.3	±0.5	—	—
MEDIUM	±0.1	±0.1	±0.2	±0.3	±0.5	±0.8	±1.2	±2	—
COARSE	±0.2	±0.3	±0.5	±0.8	±1.2	±2	±3	±4	—
VERY COARSE	—	±0.5	±1	±1.5	±2.5	±4	±6	±8	—

**MATERIAL**  
 SEE BOM  
**FINISH**  
 N/A  
**VENDOR:** N/A      **P/N:** N/A

**THIRD ANGLE PROJECTION**  

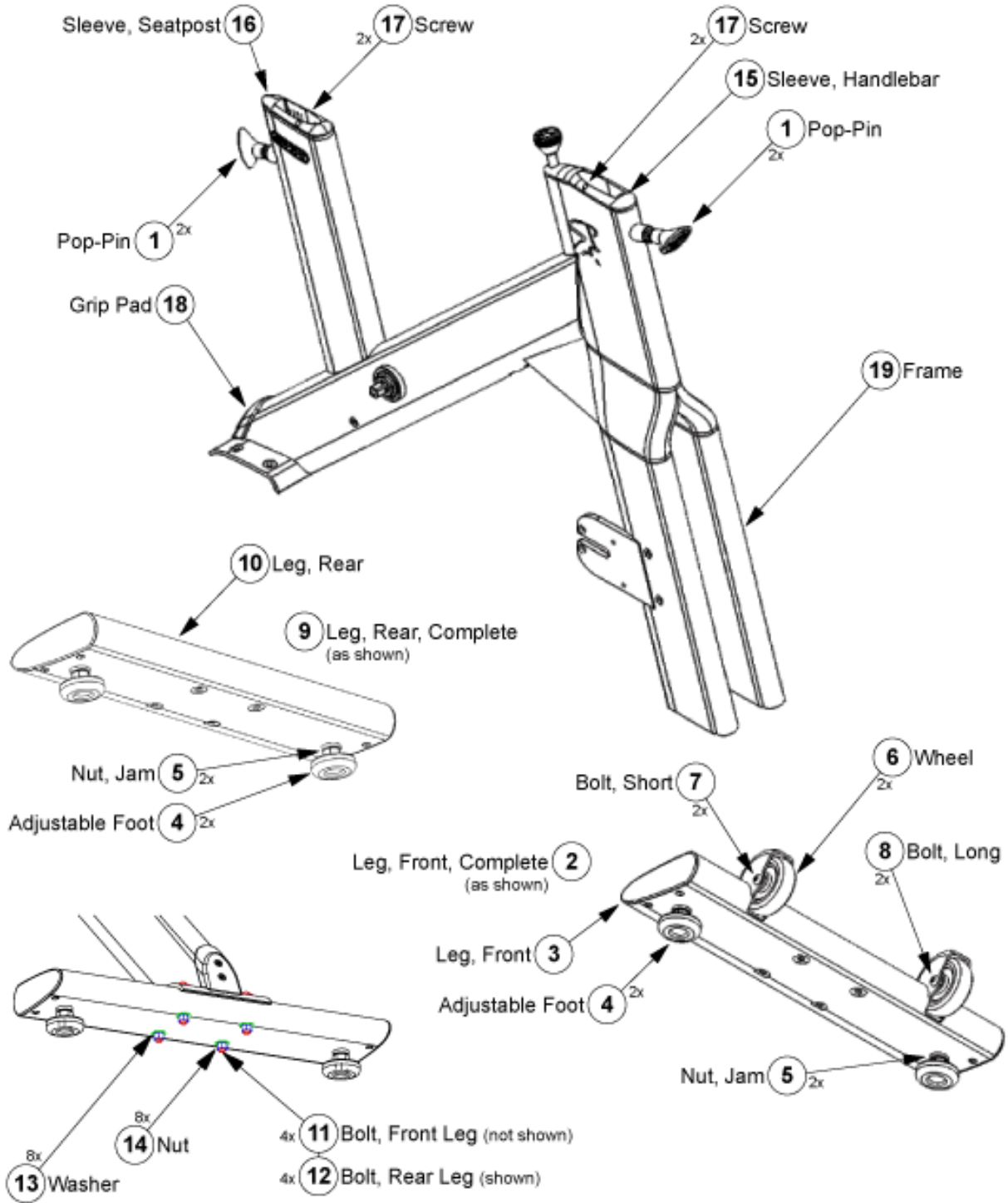

**UNISEN, INC. DBA STAR TRAC**  
 14410 Myford Road  
 Irvine CA 92606  
 STARTRAC PART NO: **740-6870**      REV: **F**  
 TITLE: **ASSY, FLYWHEEL, NXT**  
 U.O.M.: MM      SCALE: 1:6      SHEET 1 OF 1      SHEET SIZE: B



# Star Trac NXT Spinner NXT 7000

## Frame Assy

Serials Starting: NSD-1xxxxxx or NSI-1xxxxxx or NXT-1xxxxxx



Serial#s Starting: NXT-1xxxxxx, NSI-1xxxxxx, NSD-1xxxxxx

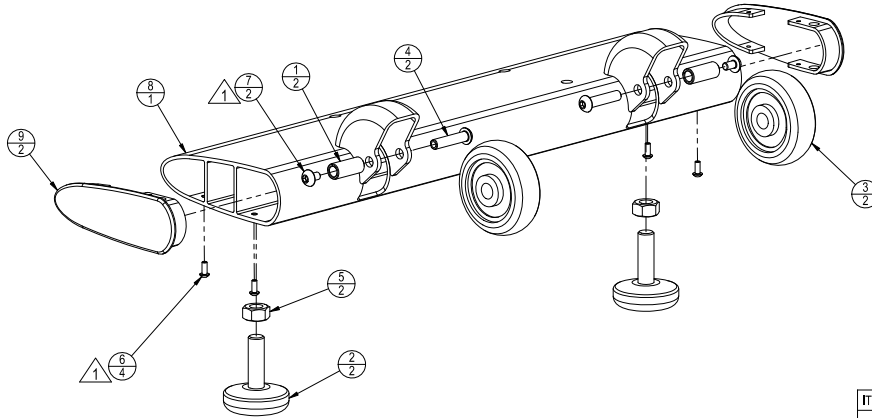
SKUs: 9-7000-xxxxx, 9-7000-SUSAP0, 9-7000-SINTP0

Frame Assembly

Callout	Part Number	Description
1	727-0010	POP PIN, SPINNER
2	727-0002	ASSY, FOOT,FRONT,W/RUBBER FEET
4	740-7023	ASSY, FOOT
5	740-7023	ASSY, FOOT
6	740-7026	*ALT* USE PART # 740-8006-KT <i>Orig Descr: WHEEL, 3"X1"X1/2" BORE</i>
7	740-7062	KIT, WHEEL ASSY, SPINNER
8	740-7062	KIT, WHEEL ASSY, SPINNER
9	727-0003	ASSY,FOOT,REAR,W/RUBBER FEET,
11	740-7314	KIT, HARDWARE, NXT
12	740-7314	KIT, HARDWARE, NXT
13	740-7314	KIT, HARDWARE, NXT
14	740-7314	KIT, HARDWARE, NXT
15	727-0008	SLEEVE, HANDLEBAR POST, SPIN
16	740-6916	KIT, ASSY, SLEEVE, SEATPOST, 7090
17	110-3272	SCREW, M4X0.7X13, PHMS
18	727-0012	COVER, GRIP PAD, RER, SPINNER
19	740-6870	ASSY, FLYWHEEL, NXT/PRO, 7090/7070

2011-06-27

REVISION HISTORY				
REV	DATE	DESCRIPTION	ECO	BY
A	05-11-05	PRODUCTION RELEASE	11255	RKL
G	04-07-10	REMOVED: P/N 800-3729, P/N 110-3317, P/N 800-3728, P/N 800-3730, P/N 800-3727, P/N 327-9026, P/N 740-7281. ADDED: P/N 740-7011, P/N 740-7023, P/N 740-7026, P/N 740-7097, P/N 740-7173, P/N 740-7181, P/N 740-7187, P/N 740-7217 AND UPDATE NOTES	13141	WW



ITEM NO.	PART NUMBER	DESCRIPTION	QTY.
1	740-7011	AXLE SLEEVE, WHEEL, NXT/E-SPINNER	2
2	740-7023	ASSY, FOOT, W/ OVER MOLD	2
3	740-7026	WHEEL, 3" X 1" X 1/2" BORE	2
4	740-7097	BOLT, WHEEL, NXT	2
5	740-7173	NUT, 1/2-13, HEX, CS, BO	2
6	740-7181	SCREW, M4X0.7X10, BHC, HE, SS	4
7	740-7187	SCREW, M6X1.25X10, BHC, HE, SS	2
8	740-7217	FRONT LEG, WELDMENT	1
9	740-7280	END CAP	2

NOTICE OF PROPRIETARY INFORMATION  
 THIS DOCUMENT SHALL NOT BE REPRODUCED NOR SHALL THE INFORMATION CONTAINED HEREIN BE USED BY OR DISCLOSED TO OTHER EXCEPT AS EXPRESSLY AUTHORIZED BY UNISEN INC. USA, STAR TRAC.

**DOCUMENT STATUS:  
 RELEASE**

CLASS OF WORK	UNLESS OTHERWISE SPECIFIED DIMS ARE IN mm. TOLERANCES FOR MEASURE OF LENGTH ARE:						
	0.5 to 3	> 3 to 6	> 6 to 30	> 30 to 120	> 120 to 400	> 400 to 1000	> 1000 to 2000
FINE	±0.05	±0.05	±0.1	±0.15	±0.2	±0.3	±0.5
MEDIUM	±0.1	±0.1	±0.2	±0.3	±0.5	±0.8	±1.2
COARSE	±0.2	±0.3	±0.5	±0.8	±1.2	±2	±3
VERY COARSE	—	±0.5	±1	±1.5	±2.5	±4	±6

**MATERIAL**  
 SEE BOM

**FINISH**  
 N/A

VENDOR: N/A

P/N: N/A



THIRD ANGLE PROJECTION

DRAWN	INTL	DATE
CHECKED	SJK	02/15/10
APPROVED		
U.O.M. mm		

**UNISEN, INC. DBA**  
**STAR TRAC**  
 14410 Myford Road  
 Irvine CA 92606

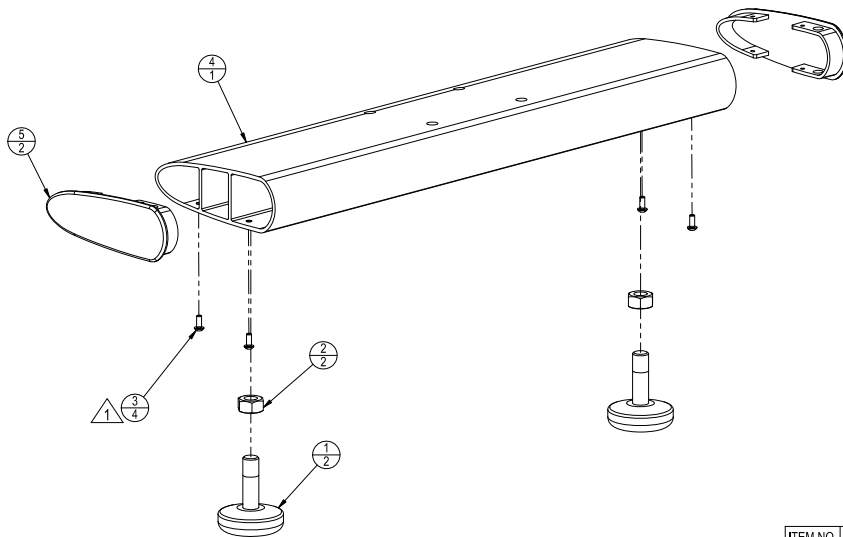
STARTRAC PART NO: **727-0002** REV: **G**

TITLE: **ASSY, FRONT LEG, NXT**

SCALE: 13 SHEET 1 OF 1 SHEET SIZE: B

NOTES: 1. APPLY LOCTITE 242/262 (GREEN) OR ENGINEERING APPROVED EQUIV. BEFORE APPLICATION.

REVISION HISTORY				
REV	DATE	DESCRIPTION	ECO	BY
A	05-11-05	PRODUCTION RELEASE	11255	RKL
F	10-21-09	REPLACED ENTIRE BOM 800-3729, 110-3317 & 727-0029 WITH 740-7023 & 740-7173 QTY 2, 740-7181 QTY 4, 740-7218, 740-7281 & 740-7280 QTY 1	12264	AK
G	04-07-10	UPDATE NOTES, REPLACED P/N: 740-7281 W/P/N: 740-7280	13141	VW



**NOTICE OF PROPRIETARY INFORMATION**  
 THIS DOCUMENT SHALL NOT BE REPRODUCED NOR SHALL THE INFORMATION CONTAINED HEREIN BE USED BY OR DISCLOSED TO OTHER EXCEPT AS EXPRESSLY AUTHORIZED BY UNISEN INC. USA, STAR TRAC.

**DOCUMENT STATUS:  
 RELEASE**

ITEM NO.	PART NUMBER	DESCRIPTION	QTY.
1	740-7023	ASSY, FOOT, W/ OVER MOLD	2
2	740-7173	NUT, 1/2-13, HEX, CS, BO	2
3	740-7181	SCREW, M4X0,7X10, BHC, HE, SS	4
4	740-7218	TUBE, REAR LEG, NXT/E-SPINNER, WELD	1
5	740-7280	END CAP	2

NOTES: (C)  
 1. APPLY LOCTITE 242/262 (GREEN) OR ENGINEERING APPROVED EQUIV. BEFORE APPLICATION.

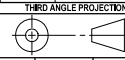
CLASS OF WORK	UNLESS OTHERWISE SPECIFIED DIMS ARE IN mm. TOLERANCES FOR MEASURE OF LENGTH ARE:						
	0.5 to 3	> 3 to 6	> 6 to 30	> 30 to 120	> 120 to 400	> 400 to 1000	> 1000 to 2000
FINE	±0.05	±0.05	±0.1	±0.15	±0.2	±0.3	±0.5
MEDIUM <b>X</b>	±0.1	±0.1	±0.2	±0.3	±0.5	±0.8	±1.2
COARSE	±0.2	±0.3	±0.5	±0.8	±1.2	±2	±3
VERY COARSE	—	±0.5	±1	±1.5	±2.5	±4	±6

**MATERIAL**  
 SEE BOM

**FINISH**  
 N/A

VENDOR: N/A

P/N: N/A



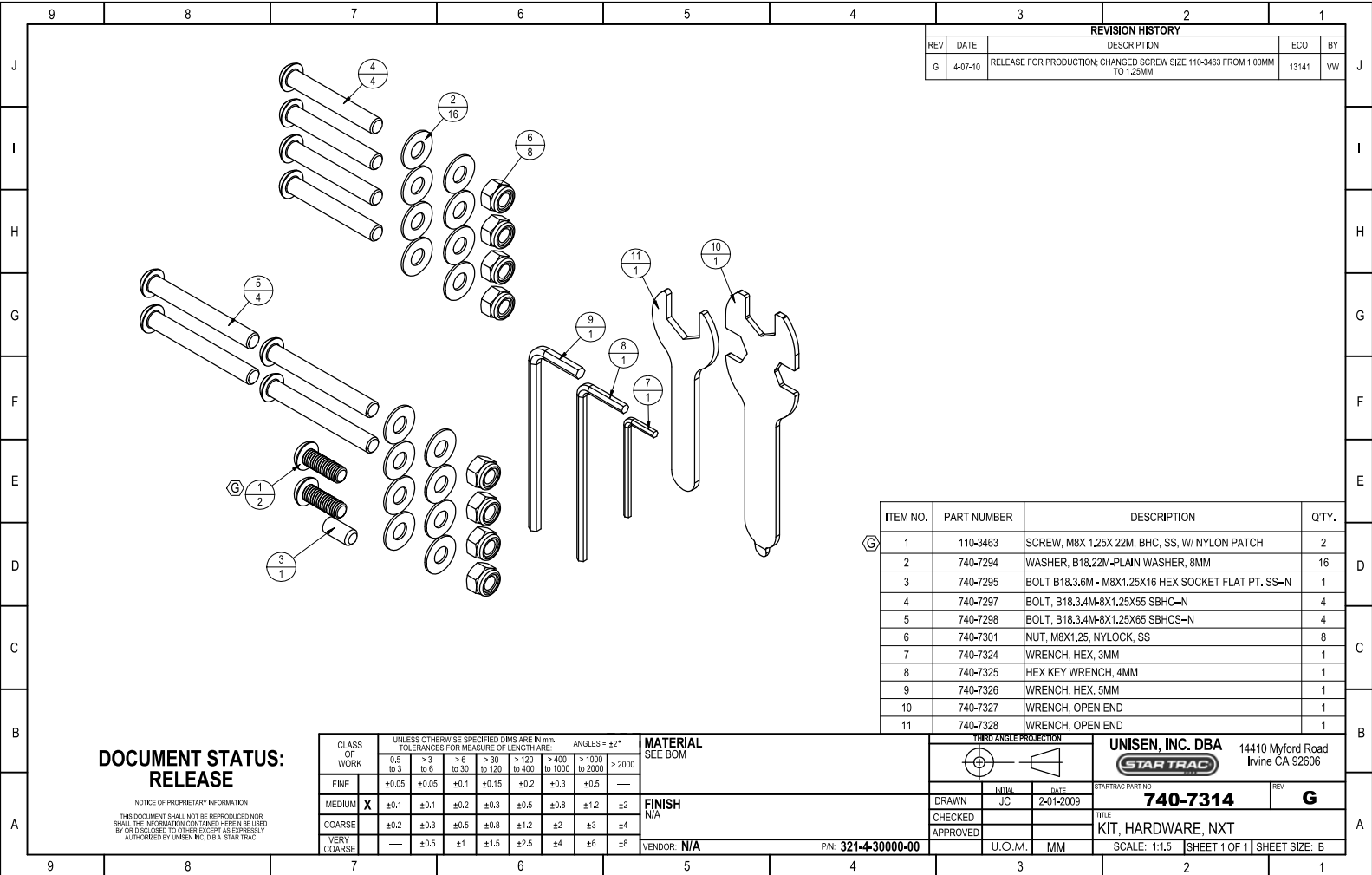
THIRD ANGLE PROJECTION	DATE
DRAWN	02/17/10
CHECKED	SJK
APPROVED	

**UNISEN, INC. DBA**  
**STAR TRAC**  
 14410 Myford Road  
 Irvine CA 92606

STARTRAC PART NO: **727-0003** REV: **G**

TITLE: **ASSY, REAR LEG, NXT/E-SPINNER**

SCALE: 1:3 SHEET 1 OF 1 SHEET SIZE: B



REVISION HISTORY				
REV	DATE	DESCRIPTION	ECO	BY
G	4-07-10	RELEASE FOR PRODUCTION; CHANGED SCREW SIZE 110-3463 FROM 1.00MM TO 1.25MM	13141	VW

ITEM NO.	PART NUMBER	DESCRIPTION	QTY.
1	110-3463	SCREW, M8X 1.25X 22M, BHC, SS, W/ NYLON PATCH	2
2	740-7294	WASHER, B18.22M-PLAIN WASHER, 8MM	16
3	740-7295	BOLT, B18.3.6M - M8X1.25X16 HEX SOCKET FLAT PT. SS-N	1
4	740-7297	BOLT, B18.3.4M-8X1.25X55 SBHC-N	4
5	740-7298	BOLT, B18.3.4M-8X1.25X65 SBHC-N	4
6	740-7301	NUT, M8X1.25, NYLOCK, SS	8
7	740-7324	WRENCH, HEX, 3MM	1
8	740-7325	HEX KEY WRENCH, 4MM	1
9	740-7326	WRENCH, HEX, 5MM	1
10	740-7327	WRENCH, OPEN END	1
11	740-7328	WRENCH, OPEN END	1

**DOCUMENT STATUS:  
RELEASE**

NOTICE OF PROPRIETARY INFORMATION  
THIS DOCUMENT SHALL NOT BE REPRODUCED NOR SHALL THE INFORMATION CONTAINED HEREIN BE USED BY OR DISCLOSED TO OTHER ENCEPT AS EXPRESSLY AUTHORIZED BY UNISEN INC. DBA STAR TRAC.

CLASS OF WORK	UNLESS OTHERWISE SPECIFIED DIMS ARE IN mm. TOLERANCES FOR MEASURE OF LENGTH ARE						ANGLES = ±2°		MATERIAL SEE BOM
	0.5 to 3	>3 to 6	>6 to 30	>30 to 120	>120 to 400	>400 to 1000	>1000 to 2000	>2000	
FINE	±0.05	±0.05	±0.1	±0.15	±0.2	±0.3	±0.5	—	FINISH N/A
MEDIUM	±0.1	±0.1	±0.2	±0.3	±0.5	±0.8	±1.2	±2	
COARSE	±0.2	±0.3	±0.5	±0.8	±1.2	±2	±3	±4	
VERY COARSE	—	±0.5	±1	±1.5	±2.5	±4	±6	±8	

THIRD ANGLE PROJECTION		UNISEN, INC. DBA <b>STAR TRAC</b>		14410 Myford Road Irvine CA 92606	
DRAWN	INITIAL JC	DATE	2-01-2009	STARTRAC PART NO	740-7314
CHECKED				REV	G
APPROVED				TITLE	KIT, HARDWARE, NXT
VENDOR: N/A		P/N: 321-4-30000-00		U.O.M.	MM
				SCALE: 1:1.5	SHEET 1 OF 1
				SHEET SIZE: B	



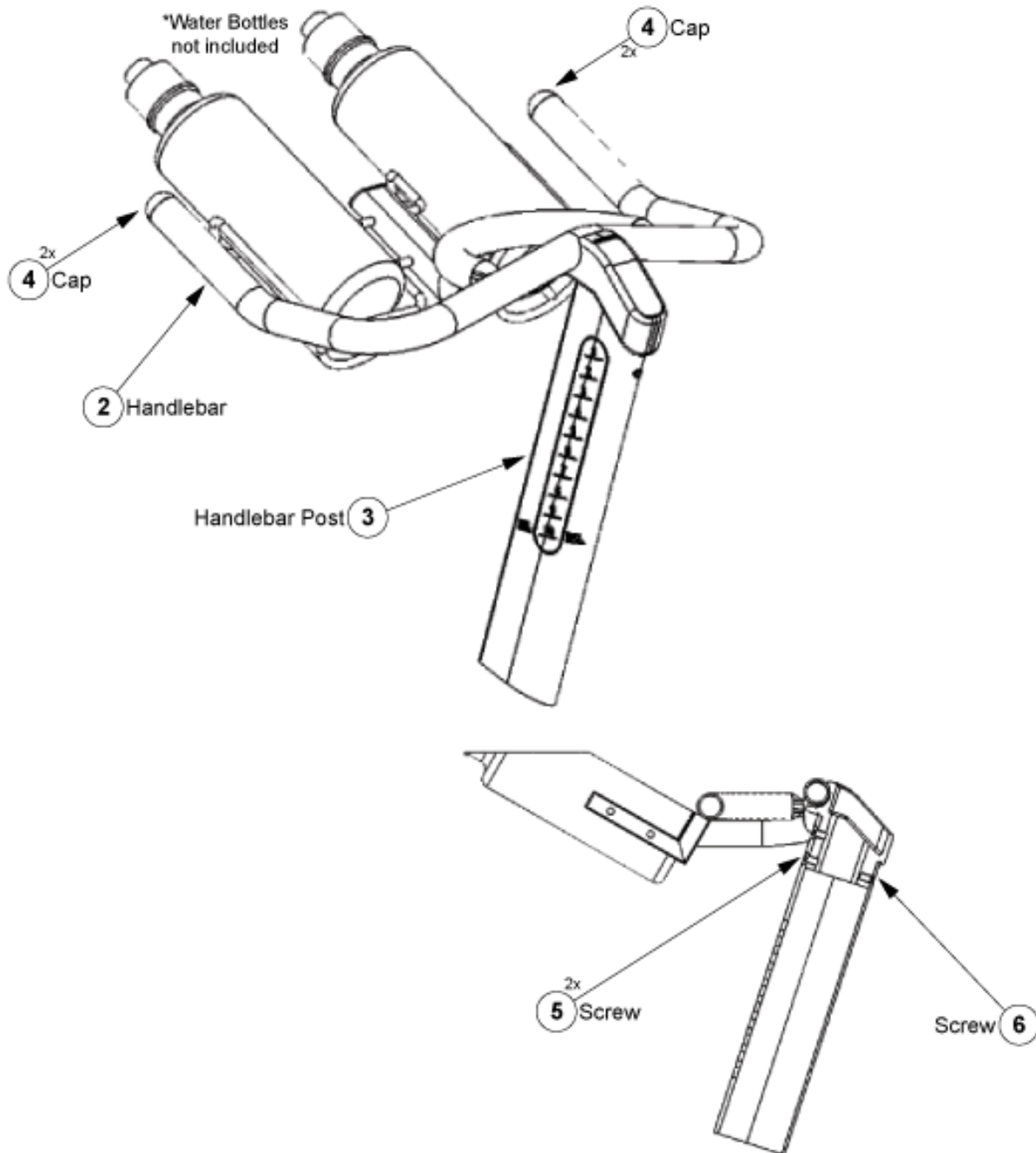


# Star Trac NXT Spinner NXT 7000

## Handlebar Assy

Serials Starting: NSD-1xxxxxx or NSI-1xxxxxx or NXT-1xxxxxx

### 1 Handlebar & Post Assy, Complete



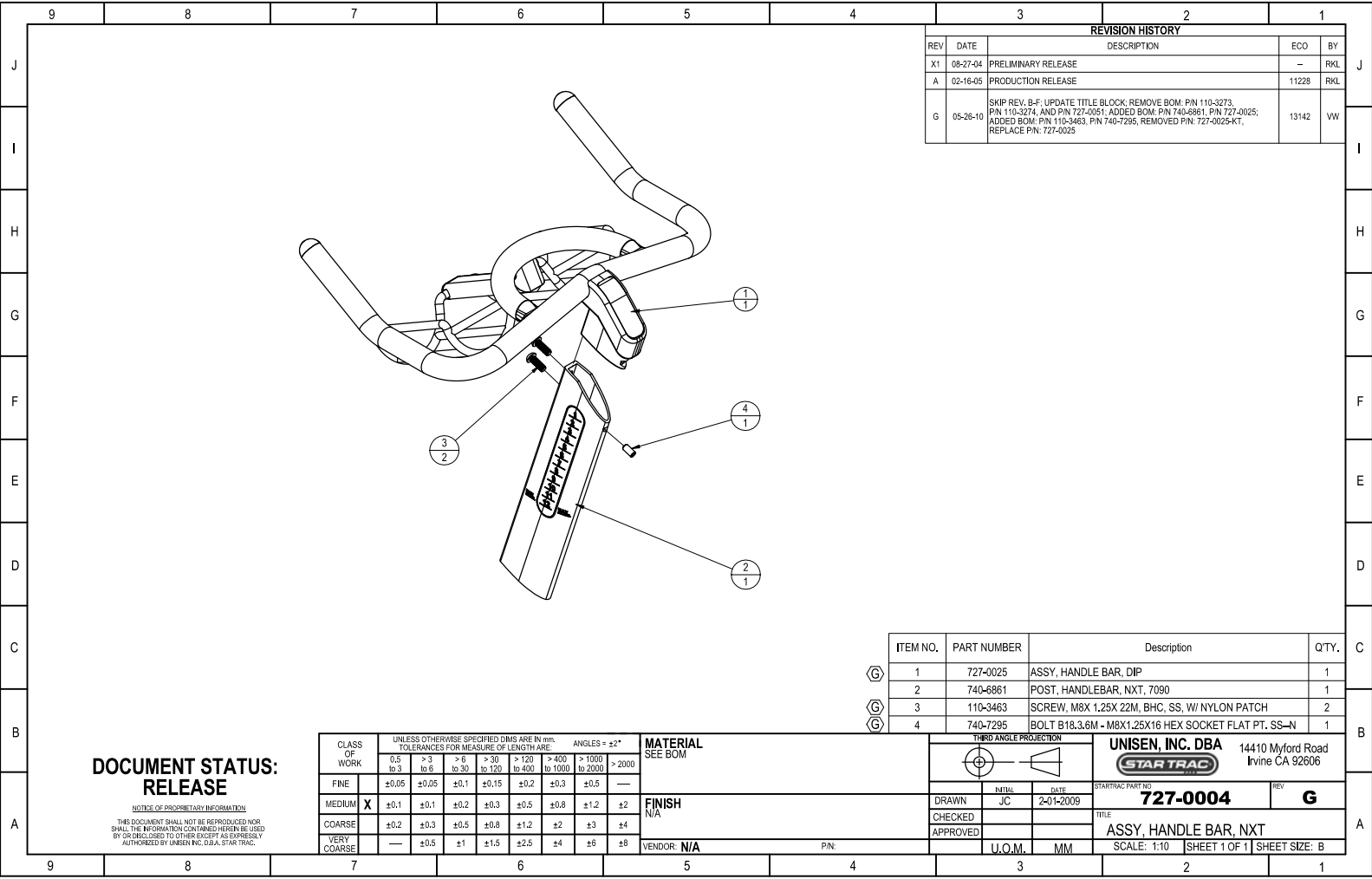
Serial#s Starting: NXT-1xxxxxxx, NSI-1xxxxxxx, NSD-1xxxxxxx

SKUs: 9-7000-xxxxx, 9-7000-SUSAP0, 9-7000-SINTP0

Handlebar Assembly

Callout	Part Number	Description
1	727-0004	ASSY, HANDLEBAR, W/POST, SPINN
2	727-0025-KT	ASSY, HANDLEBAR, FINISHED, W/
3	740-6861-KT	POST, HANDLEBAR, NXT, 7090
5	800-3951	KIT, SCREWS, HANDLEBAR,
6	800-3951	KIT, SCREWS, HANDLEBAR,

2011-06-27



REVISION HISTORY				
REV	DATE	DESCRIPTION	ECO	BY
X1	08-27-04	PRELIMINARY RELEASE	-	RKL
A	02-16-05	PRODUCTION RELEASE	11228	RKL
G	05-26-10	SKIP REV. B-F; UPDATE TITLE BLOCK; REMOVE BOM: P/N 110-3273, P/N 110-3274, AND P/N 727-0051; ADDED BOM: P/N 740-6861, P/N 727-0025; ADDED BOM: P/N 110-3463, P/N 740-7295, REMOVED P/N: 727-0025-KT, REPLACE P/N: 727-0025	13142	VW

ITEM NO.	PART NUMBER	Description	QTY.
1	727-0025	ASSY, HANDLE BAR, DIP	1
2	740-6861	POST, HANDLEBAR, NXT, 7090	1
3	110-3463	SCREW, M8X 1.25X 22M, BHC, SS, W/ NYLON PATCH	2
4	740-7295	BOLT B18.3.6M - M8X1.25X16 HEX SOCKET FLAT PT. SS-N	1

**DOCUMENT STATUS:  
RELEASE**

NOTICE OF PROPRIETARY INFORMATION  
THIS DOCUMENT SHALL NOT BE REPRODUCED NOR SHALL THE INFORMATION CONTAINED HEREIN BE USED BY OR DISCLOSED TO OTHER EXCEPT AS EXPRESSLY AUTHORIZED BY UNISEN INC. D.B.A. STAR TRAC.

CLASS OF WORK	UNLESS OTHERWISE SPECIFIED DIMS ARE In mm. TOLERANCES FOR MEASURE OF LENGTH ARE							ANGLES = ±°*		MATERIAL SEE BOM
	0.5 to 3	>3 to 6	>6 to 30	>30 to 120	>120 to 400	>400 to 1000	>1000 to 2000	>2000		
FINE	±0.05	±0.05	±0.1	±0.15	±0.2	±0.3	±0.5	—		
MEDIUM <b>X</b>	±0.1	±0.1	±0.2	±0.3	±0.5	±0.8	±1.2	±2		
COARSE	±0.2	±0.3	±0.5	±0.8	±1.2	±2	±3	±4		
VERY COARSE	—	±0.5	±1	±1.5	±2.5	±4	±6	±8		

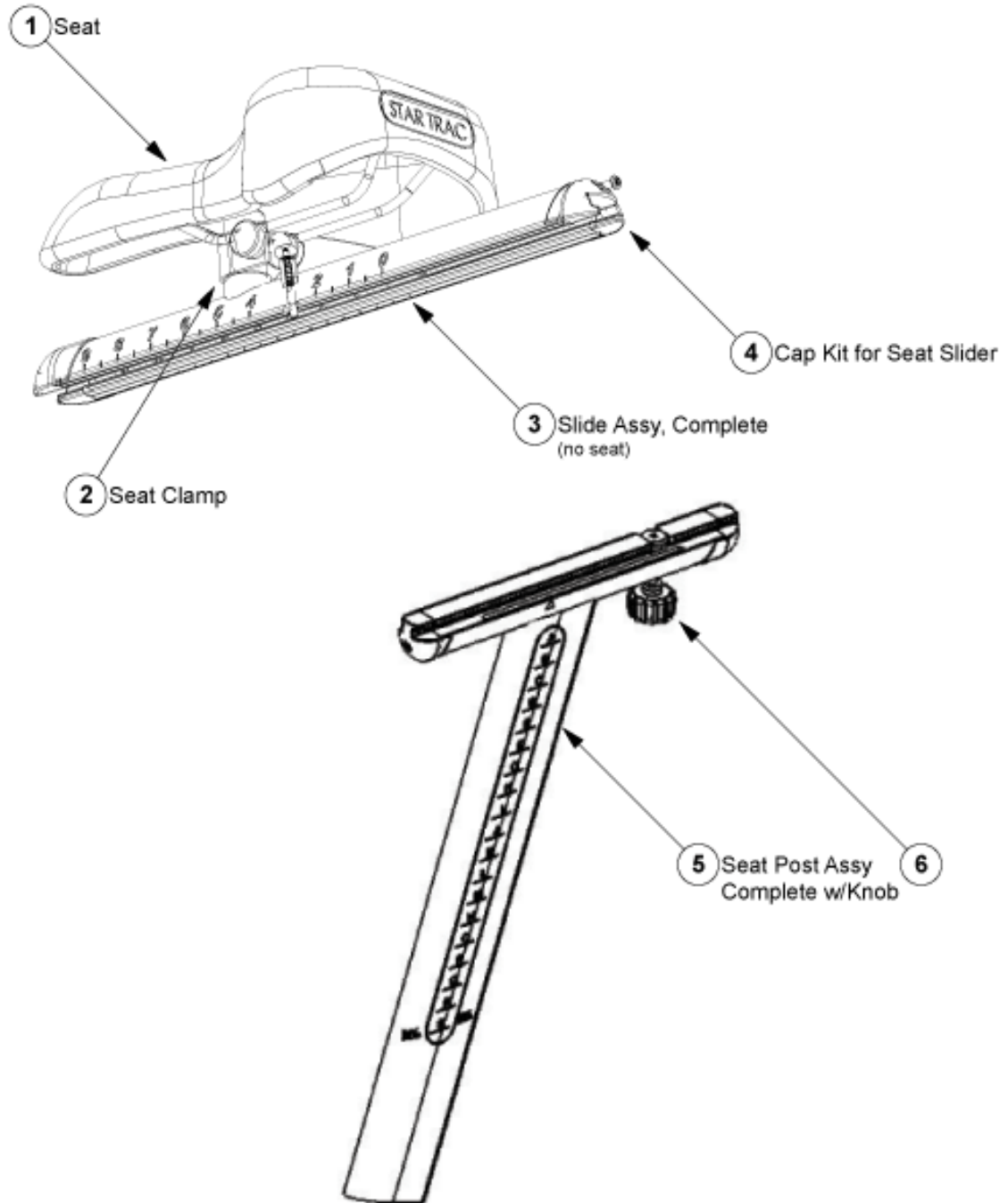
THIRD ANGLE PROJECTION		UNISEN, INC. DBA <b>STAR TRAC</b>		14410 Myford Road Irvine CA 92606	
DRAWN	INITIAL JC	DATE	2-01-2009	STARTRAC PART NO	727-0004
CHECKED				REV	G
APPROVED				TITLE	ASSY, HANDLE BAR, NXT
U.O.M.		MM	SCALE: 1:10	SHEET 1 OF 1	SHEET SIZE: B
VENDOR: N/A		P/N:			



# Star Trac NXT Spinner NXT 7000

## Seat & Slide Assy

Serials Starting: NSD-1xxxxxx or NSI-1xxxxxx or NXT-1xxxxxx



Serial#s Starting: NXT-1xxxxxxx, NSI-1xxxxxxx, NSD-1xxxxxxx

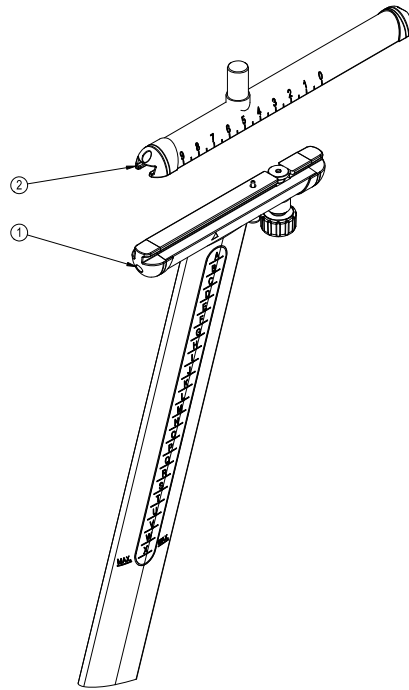
SKUs: 9-7000-xxxxx, 9-7000-SUSAP0, 9-7000-SINTP0

Seat and Slide Assembly

Callout	Part Number	Description
1	727-0022	SEAT, VELO, SPINNER ELITE/NXT
2	800-4046	CLAMP, SEAT SWIVEL SPINNER
3	740-7529	*ALT* USE PART # 740-7530-KT <i>Orig Descr: ASSY, SEAT ADJUST, NXT/E-SPINNER</i>
4	800-3963	KIT, SCREWS & ENDCAPS/SPINNER
5	740-7530-KT	KIT, SEAT POST, REAR, NXT/E-SPINNER
6	800-3964	*ALT* USE PART # 740-7216 <i>Orig Descr: KNOB ASSY KIT, FOR SLIDER, NXT</i>

2011-06-27

REVISION HISTORY			
REV	DATE	DESCRIPTION	ECO BY
A	8/16/2010	RELEASE FOR PRODUCTION	13330 DMM



NOTICE OF PROPRIETARY INFORMATION  
THIS DOCUMENT SHALL NOT BE REPRODUCED NOR  
SHALL THE INFORMATION CONTAINED HEREIN BE USED  
BY OR DISCLOSED TO OTHER EXCEPT AS EXPRESSLY  
AUTHORIZED BY UNISEN INC. USA, STAR TRAC.

**DOCUMENT STATUS:  
RELEASE**

**PRODUCTION RELEASE** 2010.08.2  
0  
09:08:03  
-07'00'

NOTES:

CLASS OF WORK	UNLESS OTHERWISE SPECIFIED DIMS ARE IN mm. TOLERANCES FOR MEASURE OF LENGTH ARE						ANGLES = ±°	
	0.5 to 3	> 3 to 6	> 6 to 30	> 30 to 120	> 120 to 400	> 400 to 1000	> 1000 to 2000	> 2000
FINE	±0.05	±0.05	±0.1	±0.15	±0.2	±0.3	±0.5	—
MEDIUM	±0.1	±0.1	±0.2	±0.3	±0.5	±0.8	±1.2	±2
COARSE <b>X</b>	±0.2	±0.3	±0.5	±0.8	±1.2	±2	±3	±4
VERY COARSE	—	±0.5	±1	±1.5	±2.5	±4	±6	±8

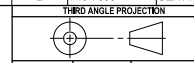
**MATERIAL**  
SEE BOM

**FINISH**  
N/A

VENDOR: N/A

P/N: N/A

ITEM NO.	PART NUMBER	DESCRIPTION	QTY.
1	740-7530	ASSY, SEAT POST, REAR, NXT/e-SPINNER	1
2	740-7650	SEAT ADJUST, NXT/eSPINNER GII	1

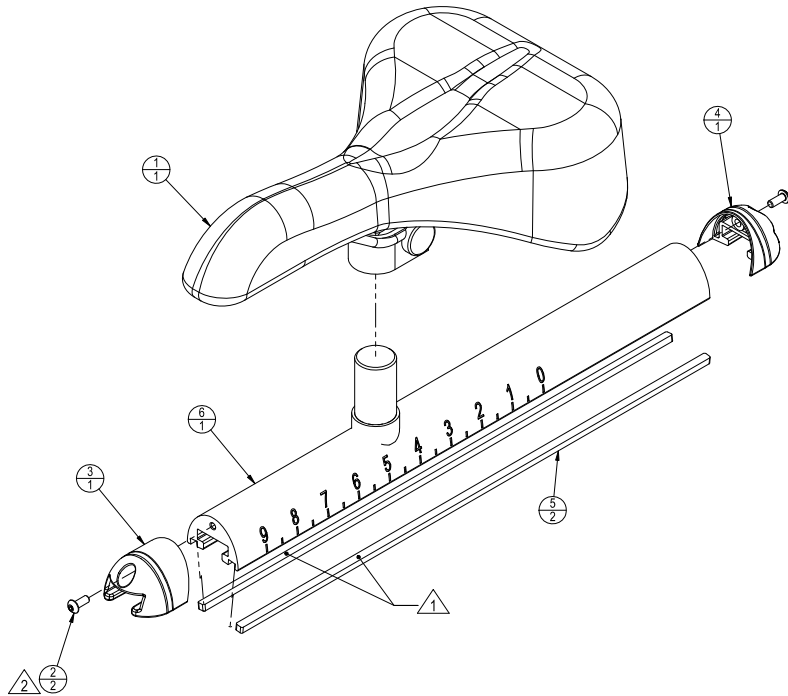


**UNISEN, INC. DBA**  
**STAR TRAC**  
14410 Myford Road  
Irvine CA 92606

THIRD ANGLE PROJECTION	DATE	STARTRAC PART NO.	REV
DRAWN	08/16/2010	<b>740-7530-KT</b>	<b>A</b>
CHECKED		TITLE: KIT, SEAT POST & SLIDER, NXT/eSPINNER	
APPROVED		SCALE: 1:4	SHEET 1 OF 1 SHEET SIZE: B

U.O.M. MM

REVISION HISTORY				
REV	DATE	DESCRIPTION	ECO	BY
A	04-07-10	PRODUCTION RELEASE	13141	SJK



**NOTICE OF PROPRIETARY INFORMATION**  
 THIS DOCUMENT SHALL NOT BE REPRODUCED NOR SHALL THE INFORMATION CONTAINED HEREIN BE USED BY OR DISCLOSED TO OTHER EXCEPT AS EXPRESSLY AUTHORIZED BY UNISEN INC. USA, STAR TRAC.

**DOCUMENT STATUS:  
 RELEASE**

ITEM NO.	PART NUMBER	DESCRIPTION	QTY.
1	727-0022	SADDLE, SPIN, NXT, E, ELITE	1
2	740-7181	SCREW, M4X0.7X10, BHC, HE, SS	2
3	740-7272	ENDCAP, FRONT, SEAT SLIDER	1
4	740-7273	ENDCAP, REAR, SEAT SLIDER	1
5	740-7274	SHIM, SEAT SLIDER, RIGHT, NXT	2
6	740-7527	SEAT SLIDER, RAIL, TOP, WELDMENT	1

- NOTES:  
 1. APPLY LOCTITE 411 OR ENGINEERING APPROVED EQUIV. BEFORE APPLICATION OF P/N: 740-7274.  
 2. APPLY LOCTITE 290 (GREEN) OR ENGINEERING APPROVED EQUIV. BEFORE APPLICATION OF P/N: 740-7181.

CLASS OF WORK	UNLESS OTHERWISE SPECIFIED DIMS ARE IN mm. TOLERANCES FOR MEASURE OF LENGTH ARE:						
	0.5 to 3	> 3 to 6	> 6 to 30	> 30 to 120	> 120 to 400	> 400 to 1000	> 1000 to 2000
FINE	±0.05	±0.05	±0.1	±0.15	±0.2	±0.3	±0.5
MEDIUM	±0.1	±0.1	±0.2	±0.3	±0.5	±0.8	±1.2
COARSE	±0.2	±0.3	±0.5	±0.8	±1.2	±2	±3
VERY COARSE	—	±0.5	±1	±1.5	±2.5	±4	±6

**MATERIAL**  
 SEE BOM

**FINISH**  
 N/A

VENDOR: N/A

P/N: N/A

THIRD ANGLE PROJECTION		
DRAWN	INTL	DATE
SJK		01/11/10
CHECKED		
APPROVED		
U.O.M. mm		

<b>UNISEN, INC. DBA</b> <b>STAR TRAC</b>		14410 Myford Road Irvine CA 92606
STARTRAC PART NO.	<b>740-7529</b>	REV <b>A</b>
TITLE: <b>ASSY, SEAT ADJUST, NXT/e-SPINNER</b>		
SCALE: 1:2	SHEET 1 OF 1	SHEET SIZE: B

## LUBE, POLISH, GREASE & MANUALS



### 1 SPINTECH® SILICONE LUBE

Spintech Silicone Fitness Lube is clean and non-staining. By using DuPont advanced Teflon fluoropolymer, Spintech Silicone is able to lubricate and protect equipment that is used in the most demanding conditions. This product is tough enough to lubricate high-mileage chains, yet gentle enough to preserve and protect rubber gaskets and sensitive plastic parts. It also works great on treadmill belts, rollers and elevation screws that require silicone lubricant.



### 2 SPINTECH® DRY LUBE

Spintech Dry-Film Fitness Lube with Teflon fluoropolymer is great for any sliding action of functional surface that must stay dry and clean. The proprietary technology provides long-lasting protection against sliding friction and is safe to use on metal. It also works great on treadmill belts and rollers that require non-silicone lubricant.



### 3 SPINTECH® POLISH

Spintech Fitness Equipment Polish with Teflon fluoropolymer is specially designed to clean, polish and protect all surfaces used in modern-day fitness equipment, including chrome, painted metal, stainless steel, plastic, clear coat, aluminum, titanium and carbon fiber. The long-lasting Carnuba wax film with Teflon repels perspiration and helps prevent rusting and oxidation.



### 4 SPINTECH® TEFLON GREASE

Spintech Fitness Equipment Grease with Teflon fluoropolymer is a high-performance, non-toxic grease that works great on all types of fitness equipment. The long-lasting formula provides excellent protection against rust, oxidation and corrosion on parts exposed to sweat and humid environments. Use this product on bearings, pedals, pivots, threaded surfaces, pulleys, gaskets, o-rings, and any moving part that requires a clean, long-lasting film of grease.

5



Volume 3 written by Jeff Wimmer specifically for the Spinner® Pro, Elite and V-Bike manufactured by Star Trac®. This exclusive edition is designed to help you implement the best Comprehensive Preventative Maintenance Program for your facility.

6



Volume 6 written by Jeff Wimmer exclusively for the Spinner® V, Pro, Elite and NXT manufactured by Star Trac®. This latest edition is designed to help you implement the best Comprehensive Preventative Maintenance Program for your facility. Contents include Daily, Weekly, and Monthly maintenance

### 7 Spinner Lube & Polish Kit





Serial#s Starting: NXT-1xxxxxxx, NSI-1xxxxxxx, NSD-1xxxxxxx

SKUs: 9-7000-xxxxx, 9-7000-SUSAP0, 9-7000-SINTP0

Lube, Grease, Polish and Manuals

Callout	Part Number	Description
1	400-0410	LUBE, SILICONE FITNESS, SPINTECH
2	400-0411	LUBE, DRY FILM FITNESS, SPINTECH
3	400-0413	POLISH, EQUIP FITNESS, SPINTECH
4	400-0412	GREASE, EQUIP FITNESS, SPINTECH
5	400-0396	MANUAL, THE ULTIMATE TECH SERIES, VOL 3
6	400-0397	MANUAL, THE ULTIMATE TECH SERIES, VOL 6
7	400-0411-KT	SPINNER LUBE & POLISH KIT

2011-06-24